


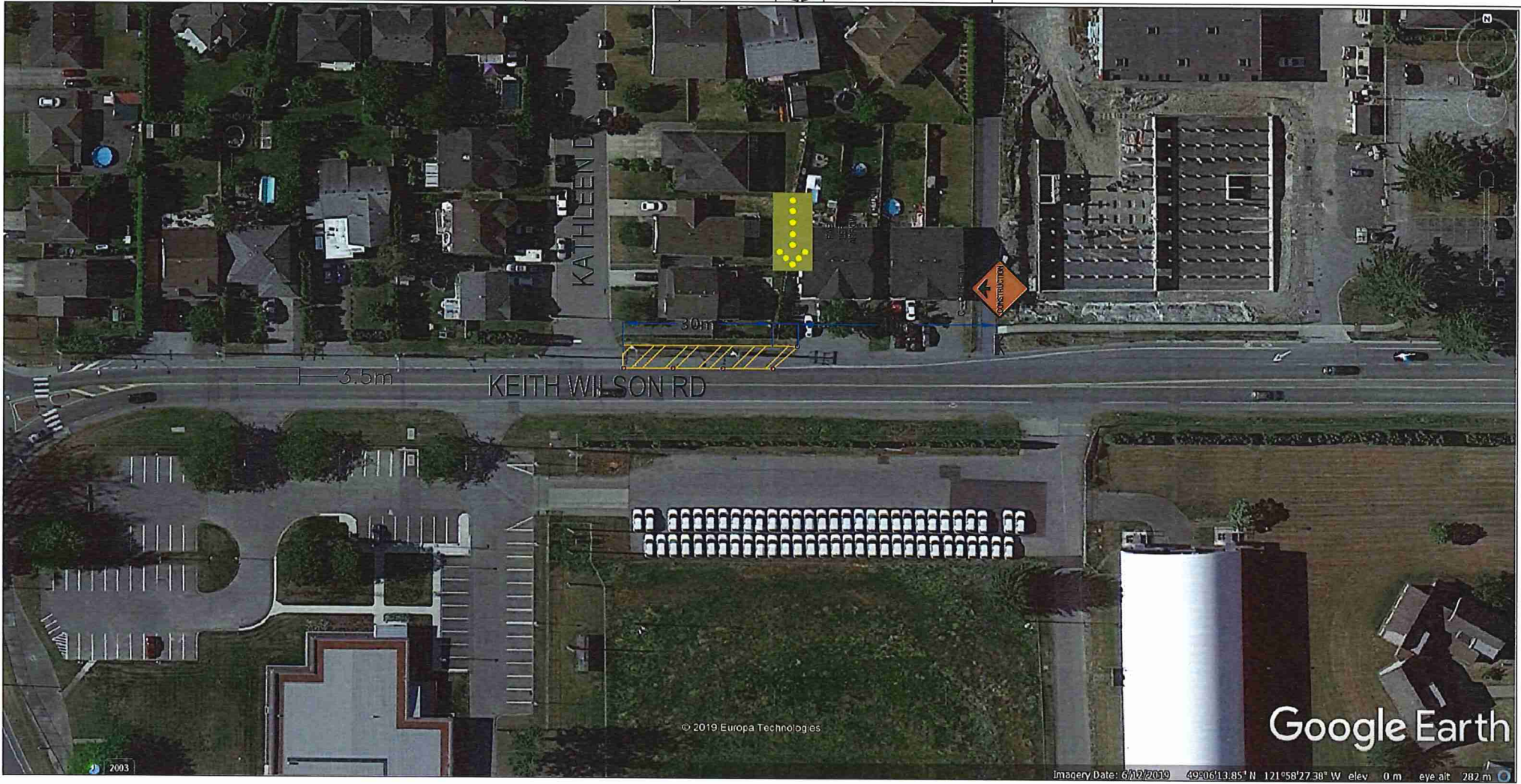
CONTRACTOR: TELUS		CONTACT: Christine Langley 604-940-8817 x 201	
CLOSURE LOCATION: Keith Wilson Rd @ Kathleen Dr			
CLOSURE DESCRIPTION: Typical Shoulder Lane Closure #1			
SCOPE: Cable Maintenance		CLOSURE DATES: February 18-21, 2020	
MUNICIPAL PROJECT NO. 2715712		CLOSURE TIMES: 9am - 5pm	
DATE: February 8, 2020		DWG NO: 1	REV NO.

LEGEND

	Sign Stand
	Closure Area
	Delineator
	TCP

- NOTES:**
- Traffic Plan based on a 50 km/h speed zone
 - Minimum 3.2m lane width to be maintained at all times
 - TCP To assist with pedestrians when needed
 - Access to driveways to be maintained
 - Traffic plan based on the Traffic Management Manual for Work on Roadways(2015)
 - Minimum 1.5m non-slip traction ramps to be placed as let-downs into pedestrian provision

Author: Christine Langley



© 2019 Europa Technologies

Google Earth

Imagery Date: 6/12/2019 49°06'13.85" N 121°58'27.38" W elev 0 m eye alt 282 m



CONTRACTOR: TELUS		CONTACT: Christine Langley 604-940-8817 x 201	
CLOSURE LOCATION: KEITH WILSON RD 40M E OF COWICHAM PL			
CLOSURE DESCRIPTION: Typical Single Lane Alternating - Closure #2			
SCOPE: CABLE MAINTENANCE		CLOSURE DATES: FEBRUARY 18-21, 2020	
MUNICIPAL PROJECT NO. 2715712		CLOSURE TIMES: 9am - 5pm	
DATE: February 8, 2020		DWG NO: 1	REV NO.

LEGEND

- Sign Stand
- Closure Area
- Delineator
- TCP

NOTES:

- Traffic Plan based on a 50 km/h speed zone
- Minimum 3.2m lane width to be maintained at all times
- TCP To assist with pedestrians when needed
- Access to driveways to be maintained
- Traffic plan based on the Traffic Management Manual for Work on Roadways(2015)
- Minimum 1.5m non-slip traction ramps to be placed as let-downs into pedestrian provision

Author: Christine Langley

